

## Product datasheet for **TA363603**

### Hsp105 (HSPH1) Rabbit Polyclonal Antibody

#### Product data:

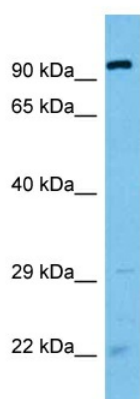
Product Type:	Primary Antibodies
Applications:	WB
Reactivity:	Human
Host:	Rabbit
Clonality:	Polyclonal
Immunogen:	The immunogen is a synthetic peptide directed towards the middle region of human HSPH1
Specificity:	<b>Expected reactivity:</b> Human
Formulation:	Liquid. Purified antibody supplied in 1x PBS buffer with 0.09% (w/v) sodium azide and 2% sucrose. <i>Note that this product is shipped as lyophilized powder to China customers.</i>
Concentration:	lot specific
Purification:	Affinity purified
Conjugation:	Unconjugated
Storage:	For short term use, store at 2-8°C up to 1 week. For long term storage, store at -20°C in small aliquots to prevent freeze-thaw cycles.
Stability:	Shelf life: one year from despatch.
Predicted Protein Size:	94 kDa
Gene Name:	heat shock protein family H (Hsp110) member 1
Database Link:	<a href="#">NP_001273432.1</a> <a href="#">Entrez Gene 10808 Human</a> <a href="#">Q92598</a>
Background:	This gene encodes a member of the heat shock protein 70 family of proteins. The encoded protein functions as a nucleotide exchange factor for the molecular chaperone heat shock cognate 71 kDa protein (Hsc70). In addition, this protein plays a distinct but related role as a holdase that inhibits the aggregation of misfolded proteins, including the cystic fibrosis transmembrane conductance regulator (CFTR) protein. Elevated expression of this protein has been observed in numerous human cancers.
Synonyms:	DKFZp686M05240; HSP105; HSP105A; HSP105B; HSP110; KIAA0201; NY-CO-25



[View online »](#)

Protein Families: Stem cell - Pluripotency

### Product images:



Host: Rabbit  
Target Name: HSPH1  
Sample Type: HT1080 Cell Lysate  
Antibody Dilution: 1.0 $\mu$ g/ml

Host: Rabbit  
Target Name: HSPH1  
Sample Tissue: Human HT1080 Whole Cell lysates  
Antibody Dilution: 1 $\mu$ g/ml