

Product datasheet for **TA363601**

CAMKV Rabbit Polyclonal Antibody

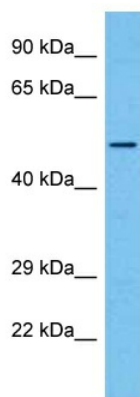
Product data:

Product Type:	Primary Antibodies
Applications:	WB
Reactivity:	Human
Host:	Rabbit
Clonality:	Polyclonal
Immunogen:	The immunogen is a synthetic peptide directed towards the middle region of human CAMKV
Specificity:	Expected reactivity: Human
Formulation:	Liquid. Purified antibody supplied in 1x PBS buffer with 0.09% (w/v) sodium azide and 2% sucrose. <i>Note that this product is shipped as lyophilized powder to China customers.</i>
Concentration:	lot specific
Purification:	Affinity purified
Conjugation:	Unconjugated
Storage:	For short term use, store at 2-8°C up to 1 week. For long term storage, store at -20°C in small aliquots to prevent freeze-thaw cycles.
Stability:	Shelf life: one year from despatch.
Predicted Protein Size:	51 kDa
Gene Name:	CaM kinase like vesicle associated
Database Link:	NP_001307076.1 Entrez Gene 79012 Human Q8NCB2-2
Background:	Does not appear to have detectable kinase activity.
Synonyms:	1G5; MGC8407; VACAMKL



[View online »](#)

Product images:



Host: Rabbit
Target Name: CAMKV
Sample Type: LN18 Cell Lysate
Antibody Dilution: 1.0µg/ml

Host: Rabbit
Target Name: CAMKV
Sample Tissue: Human LN18 Whole Cell lysates
Antibody Dilution: 1ug/ml