

Product datasheet for **TA363596**

VRK1 Rabbit Polyclonal Antibody

Product data:

Product Type:	Primary Antibodies
Applications:	WB
Reactivity:	Human
Host:	Rabbit
Clonality:	Polyclonal
Immunogen:	The immunogen is a synthetic peptide directed towards the C terminal region of human VRK1
Specificity:	Expected reactivity: Human
Formulation:	Liquid. Purified antibody supplied in 1x PBS buffer with 0.09% (w/v) sodium azide and 2% sucrose. <i>Note that this product is shipped as lyophilized powder to China customers.</i>
Concentration:	lot specific
Purification:	Affinity purified
Conjugation:	Unconjugated
Storage:	For short term use, store at 2-8°C up to 1 week. For long term storage, store at -20°C in small aliquots to prevent freeze-thaw cycles.
Stability:	Shelf life: one year from despatch.
Predicted Protein Size:	45 kDa
Gene Name:	vaccinia related kinase 1
Database Link:	NP_003375.1 Entrez Gene 7443 Human Q99986



[View online »](#)

Background:

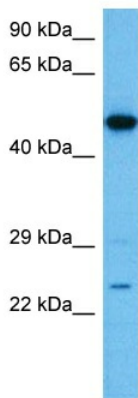
Serine/threonine kinase involved in Golgi disassembly during the cell cycle: following phosphorylation by PLK3 during mitosis, required to induce Golgi fragmentation. Acts by mediating phosphorylation of downstream target protein. Phosphorylates 'Thr-18' of p53/TP53 and may thereby prevent the interaction between p53/TP53 and MDM2. Phosphorylates casein and histone H3. Phosphorylates BANF1: disrupts its ability to bind DNA, reduces its binding to LEM domain-containing proteins and causes its relocalization from the nucleus to the cytoplasm. Phosphorylates ATF2 which activates its transcriptional activity.

Synonyms:

MGC117401; MGC138280; MGC142070; PCH1

Protein Families:

Druggable Genome, Protein Kinase

Product images:

Host: Rabbit
Target Name: VRK1
Sample Type: OVCAR-3 Cell Lysate
Antibody Dilution: 1.0µg/ml

Host: Rabbit
Target Name: VRK1
Sample Tissue: Human OVCAR-3 Whole Cell lysates
Antibody Dilution: 1ug/ml