

Product datasheet for **TA363594**

USH1C Rabbit Polyclonal Antibody

Product data:

Product Type:	Primary Antibodies
Applications:	WB
Reactivity:	Human
Host:	Rabbit
Clonality:	Polyclonal
Immunogen:	The immunogen is a synthetic peptide directed towards the C terminal region of human USH1C
Specificity:	Expected reactivity: Human
Formulation:	Liquid. Purified antibody supplied in 1x PBS buffer with 0.09% (w/v) sodium azide and 2% sucrose. <i>Note that this product is shipped as lyophilized powder to China customers.</i>
Concentration:	lot specific
Purification:	Affinity purified
Conjugation:	Unconjugated
Storage:	For short term use, store at 2-8°C up to 1 week. For long term storage, store at -20°C in small aliquots to prevent freeze-thaw cycles.
Stability:	Shelf life: one year from despatch.
Predicted Protein Size:	46 kDa
Gene Name:	USH1 protein network component harmonin
Database Link:	NP_001284693.1 Entrez Gene 10083 Human Q9Y6N9-3



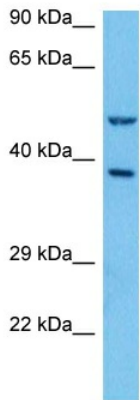
[View online »](#)

Background:

Anchoring/scaffolding protein that is a part of the functional network formed by USH1C, USH1G, CDH23 and MYO7A that mediates mechanotransduction in cochlear hair cells. Required for normal development and maintenance of cochlear hair cell bundles (By similarity). As part of the intermicrovillar adhesion complex/IMAC plays a role in brush border differentiation, controlling microvilli organization and length. Probably plays a central regulatory role in the assembly of the complex, recruiting CDHR2, CDHR5 and MYO7B to the microvilli tips.

Synonyms:

AIE-75; AIE75; DFNB18; harmonin; NY-CO-37; NY-CO-38; PDZ-45; PDZ-73; PDZ-73/NY-CO-38; PDZ73; ush1cpst

Product images:


Host: Rabbit
 Target Name: USH1C
 Sample Type: HepG2 Cell Lysate
 Antibody Dilution: 1.0µg/ml

Host: Rabbit
 Target Name: USH1C
 Sample Tissue: Human HepG2 Whole Cell lysates
 Antibody Dilution: 1ug/ml