

## Product datasheet for **TA363592**

### Cytochrome C Oxidase subunit VIb (COX6B1) Rabbit Polyclonal Antibody

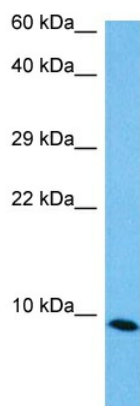
#### Product data:

Product Type:	Primary Antibodies
Applications:	WB
Reactivity:	Human
Host:	Rabbit
Clonality:	Polyclonal
Immunogen:	The immunogen is a synthetic peptide directed towards the N terminal region of human COX6B1
Specificity:	<b>Expected reactivity:</b> Human
Formulation:	Liquid. Purified antibody supplied in 1x PBS buffer with 0.09% (w/v) sodium azide and 2% sucrose. <i>Note that this product is shipped as lyophilized powder to China customers.</i>
Concentration:	lot specific
Purification:	Affinity purified
Conjugation:	Unconjugated
Storage:	For short term use, store at 2-8°C up to 1 week. For long term storage, store at -20°C in small aliquots to prevent freeze-thaw cycles.
Stability:	Shelf life: one year from despatch.
Predicted Protein Size:	10 kDa
Gene Name:	cytochrome c oxidase subunit 6B1
Database Link:	<a href="#">NP_001854.1</a> <a href="#">Entrez Gene 1340 Human</a> <a href="#">P14854</a>
Background:	Connects the two COX monomers into the physiological dimeric form.
Synonyms:	COX6B; COXG
Protein Pathways:	Alzheimer's disease, Cardiac muscle contraction, Huntington's disease, Metabolic pathways, Oxidative phosphorylation, Parkinson's disease



[View online »](#)

## Product images:



Host: Rabbit  
Target Name: COX6B1  
Sample Type: 293T Cell Lysate  
Antibody Dilution: 1.0µg/ml

Host: Rabbit  
Target Name: COX6B1  
Sample Tissue: Human 293T Whole Cell lysates  
Antibody Dilution: 1ug/ml