

## Product datasheet for **TA363582**

### Fam204a Rabbit Polyclonal Antibody

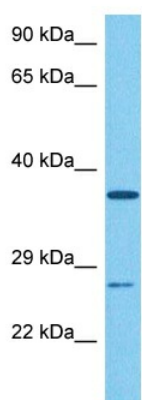
#### Product data:

Product Type:	Primary Antibodies
Applications:	WB
Reactivity:	Mouse
Host:	Rabbit
Clonality:	Polyclonal
Immunogen:	The immunogen is a synthetic peptide directed towards the C terminal region of mouse D19ERTD737E
Specificity:	<b>Expected reactivity:</b> Mouse
Formulation:	Liquid. Purified antibody supplied in 1x PBS buffer with 0.09% (w/v) sodium azide and 2% sucrose.
Concentration:	lot specific
Purification:	Affinity purified
Conjugation:	Unconjugated
Storage:	For short term use, store at 2-8°C up to 1 week. For long term storage, store at -20°C in small aliquots to prevent freeze-thaw cycles.
Stability:	Shelf life: one year from despatch.
Predicted Protein Size:	27 kDa
Gene Name:	family with sequence similarity 204, member A
Database Link:	<a href="#">NP_083924.2</a> <a href="#">Entrez Gene 76539 Mouse</a> <a href="#">Q8C6C7</a>
Synonyms:	bA319I23.1; C10orf84; RP11-319I23.1



[View online »](#)

## Product images:



Host: Rabbit  
Target Name: D19ErtD737e  
Sample Type: Mouse Small Intestine Lysate  
Antibody Dilution: 1.0 $\mu$ g/ml

Host: Rabbit  
Target Name: D19ERTD737E  
Sample Tissue: Mouse Small Intestine lysates  
Antibody Dilution: 1  $\mu$ g/ml