

## Product datasheet for **TA363579**

### Mrgpra7 Rabbit Polyclonal Antibody

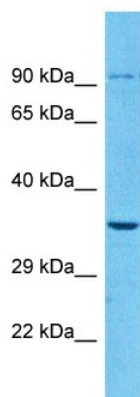
#### Product data:

Product Type:	Primary Antibodies
Applications:	WB
Reactivity:	Mouse
Host:	Rabbit
Clonality:	Polyclonal
Immunogen:	The immunogen is a synthetic peptide directed towards the C terminal region of mouse MRGPRA7
Specificity:	<b>Expected reactivity:</b> Mouse
Formulation:	Liquid. Purified antibody supplied in 1x PBS buffer with 0.09% (w/v) sodium azide and 2% sucrose. <i>Note that this product is shipped as lyophilized powder to China customers.</i>
Concentration:	lot specific
Purification:	Affinity purified
Conjugation:	Unconjugated
Storage:	For short term use, store at 2-8°C up to 1 week. For long term storage, store at -20°C in small aliquots to prevent freeze-thaw cycles.
Stability:	Shelf life: one year from despatch.
Predicted Protein Size:	35 kDa
Gene Name:	MAS-related GPR, member A7
Database Link:	<a href="#">NP_997418.1</a> <a href="#">Entrez Gene 404236 Mouse</a> <a href="#">Q91ZC5</a>
Background:	Orphan receptor. May be a receptor for RFamide-family neuropeptides such as NPFF and NPAF, which are analgesic in vivo. May regulate nociceptor function and/or development, including the sensation or modulation of pain (By similarity).
Synonyms:	MrgA7



[View online »](#)

Product images:



Host: Rabbit  
Target Name: Mrgpra7  
Sample Type: Mouse Heart Lysate  
Antibody Dilution: 1.0µg/ml

Host: Rabbit  
Target Name: MRGPRA7  
Sample Tissue: Mouse Heart lysates  
Antibody Dilution: 1 µg/ml