

Product datasheet for **TA363578**

Mrgpra5 Rabbit Polyclonal Antibody

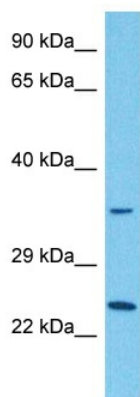
Product data:

Product Type:	Primary Antibodies
Applications:	WB
Reactivity:	Mouse
Host:	Rabbit
Clonality:	Polyclonal
Immunogen:	The immunogen is a synthetic peptide directed towards the N terminal region of mouse MRGPRA5
Specificity:	Expected reactivity: Mouse
Formulation:	Liquid. Purified antibody supplied in 1x PBS buffer with 0.09% (w/v) sodium azide and 2% sucrose.
Concentration:	lot specific
Purification:	Affinity purified
Conjugation:	Unconjugated
Storage:	For short term use, store at 2-8°C up to 1 week. For long term storage, store at -20°C in small aliquots to prevent freeze-thaw cycles.
Stability:	Shelf life: one year from despatch.
Predicted Protein Size:	35 kDa
Gene Name:	MAS-related GPR, member A5
Database Link:	NP_997417.1 Entrez Gene 404235 Mouse Q91ZC7
Background:	Orphan receptor. May be a receptor for RFamide-family neuropeptides such as NPFF and NPAF, which are analgesic in vivo. May regulate nociceptor function and/or development, including the sensation or modulation of pain (By similarity).
Synonyms:	MrgA5



[View online »](#)

Product images:



Host: Rabbit
Target Name: Mrgpra5
Sample Type: Mouse Skeletal Muscle Lysate
Antibody Dilution: 1.0µg/ml

Host: Rabbit
Target Name: MRGPRA5
Sample Tissue: Mouse Skeletal Muscle lysates
Antibody Dilution: 1ug/ml