

Product datasheet for **TA363574**

Stk-ps2 Rabbit Polyclonal Antibody

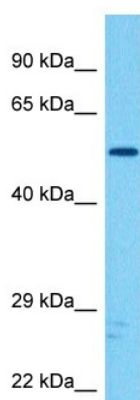
Product data:

Product Type:	Primary Antibodies
Applications:	WB
Reactivity:	Mouse
Host:	Rabbit
Clonality:	Polyclonal
Immunogen:	The immunogen is a synthetic peptide directed towards the C terminal region of mouse GM4776
Specificity:	Expected reactivity: Mouse
Formulation:	Liquid. Purified antibody supplied in 1x PBS buffer with 0.09% (w/v) sodium azide and 2% sucrose.
Concentration:	lot specific
Purification:	Affinity purified
Conjugation:	Unconjugated
Storage:	For short term use, store at 2-8°C up to 1 week. For long term storage, store at -20°C in small aliquots to prevent freeze-thaw cycles.
Stability:	Shelf life: one year from despatch.
Predicted Protein Size:	55 kDa
Gene Name:	serine/threonine kinase 2
Database Link:	BAC26584.1 Entrez Gene 212225 Mouse Q8C0V7



[View online »](#)

Product images:



Host: Rabbit
Target Name: Gm4776
Sample Type: Mouse Skeletal Muscle Lysate
Antibody Dilution: 1.0µg/ml

Host: Rabbit
Target Name: GM4776
Sample Tissue: Mouse Skeletal Muscle lysates
Antibody Dilution: 1ug/ml