

Product datasheet for **TA363549**

Olfr1537 Rabbit Polyclonal Antibody

Product data:

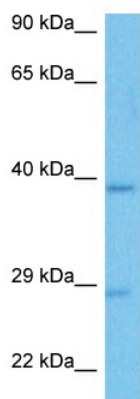
Product Type:	Primary Antibodies
Applications:	WB
Reactivity:	Mouse
Host:	Rabbit
Clonality:	Polyclonal
Immunogen:	The immunogen is a synthetic peptide directed towards the middle region of mouse OLFR144
Specificity:	Expected reactivity: Mouse
Formulation:	Liquid. Purified antibody supplied in 1x PBS buffer with 0.09% (w/v) sodium azide and 2% sucrose.
Concentration:	lot specific
Purification:	Affinity purified
Conjugation:	Unconjugated
Storage:	For short term use, store at 2-8°C up to 1 week. For long term storage, store at -20°C in small aliquots to prevent freeze-thaw cycles.
Stability:	Shelf life: one year from despatch.
Predicted Protein Size:	35 kDa
Gene Name:	olfactory receptor 1537
Database Link:	NP_997548.1 Entrez Gene 257959 Mouse P34983
Background:	Olfactory receptors interact with odorant molecules in the nose, to initiate a neuronal response that triggers the perception of a smell. The olfactory receptor proteins are members of a large family of G-protein-coupled receptors (GPCR) arising from single coding-exon genes. Olfactory receptors share a 7-transmembrane domain structure with many neurotransmitter and hormone receptors and are responsible for the recognition and G protein-mediated transduction of odorant signals. The olfactory receptor gene family is the largest in the genome. The nomenclature assigned to the olfactory receptor genes and proteins for this organism is independent of other organisms.



[View online »](#)

Synonyms: K4; MOR171-32P; MOR171-41P; Olfr144; Olfr1537-ps1

Product images:



Host: Rabbit
Target Name: Olfr144
Sample Type: Mouse Kidney Lysate
Antibody Dilution: 1.0µg/ml

Host: Rabbit
Target Name: OLFR144
Sample Tissue: Mouse Kidney lysates
Antibody Dilution: 1ug/ml