

Product datasheet for **TA363545**

Tas2r103 Rabbit Polyclonal Antibody

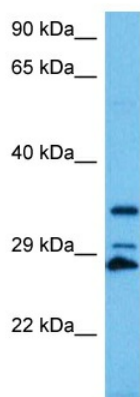
Product data:

Product Type:	Primary Antibodies
Applications:	WB
Reactivity:	Mouse
Host:	Rabbit
Clonality:	Polyclonal
Immunogen:	The immunogen is a synthetic peptide directed towards the middle region of mouse TAS2R103
Specificity:	Expected reactivity: Mouse
Formulation:	Liquid. Purified antibody supplied in 1x PBS buffer with 0.09% (w/v) sodium azide and 2% sucrose. <i>Note that this product is shipped as lyophilized powder to China customers.</i>
Concentration:	lot specific
Purification:	Affinity purified
Conjugation:	Unconjugated
Storage:	For short term use, store at 2-8°C up to 1 week. For long term storage, store at -20°C in small aliquots to prevent freeze-thaw cycles.
Stability:	Shelf life: one year from despatch.
Predicted Protein Size:	35 kDa
Gene Name:	taste receptor, type 2, member 103
Database Link:	NP_444441.1 Entrez Gene 667992 Mouse Q9JKA3
Background:	Gustducin-coupled receptor implicated in the perception of bitter compounds in the oral cavity and the gastrointestinal tract. Signals through PLCB2 and the calcium-regulated cation channel TRPM5.
Synonyms:	EG667992; mGR03; mt2r63; T2R3; Tas2r3; Tas2r10; TRB2



[View online »](#)

Product images:



Host: Rabbit
Target Name: Tas2r103
Sample Type: Mouse Heart Lysate
Antibody Dilution: 1.0µg/ml

Host: Rabbit
Target Name: TAS2R103
Sample Tissue: Mouse Heart lysates
Antibody Dilution: 1 µg/ml