

## Product datasheet for **TA363539**

### Tas2r123 Rabbit Polyclonal Antibody

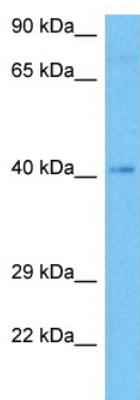
#### Product data:

Product Type:	Primary Antibodies
Applications:	WB
Reactivity:	Mouse
Host:	Rabbit
Clonality:	Polyclonal
Immunogen:	The immunogen is a synthetic peptide directed towards the C terminal region of mouse TAS2R123
Specificity:	<b>Expected reactivity:</b> Mouse
Formulation:	Liquid. Purified antibody supplied in 1x PBS buffer with 0.09% (w/v) sodium azide and 2% sucrose.
Concentration:	lot specific
Purification:	Affinity purified
Conjugation:	Unconjugated
Storage:	For short term use, store at 2-8°C up to 1 week. For long term storage, store at -20°C in small aliquots to prevent freeze-thaw cycles.
Stability:	Shelf life: one year from despatch.
Predicted Protein Size:	38 kDa
Gene Name:	taste receptor, type 2, member 123
Database Link:	<a href="#">NP_996908.1</a> <a href="#">Entrez Gene 353167 Mouse</a> <a href="#">P59528</a>
Background:	Gustducin-coupled receptor implicated in the perception of bitter compounds in the oral cavity and the gastrointestinal tract. Signals through PLCB2 and the calcium-regulated cation channel TRPM5 (By similarity).
Synonyms:	mGR23; mt2r55; T2R23; t2r55; Tas2r14; Tas2r23



[View online »](#)

## Product images:



Host: Rabbit  
Target Name: Tas2r123  
Sample Type: Mouse Heart Lysate  
Antibody Dilution: 1.0 $\mu$ g/ml

Host: Rabbit  
Target Name: TAS2R123  
Sample Tissue: Mouse Heart lysates  
Antibody Dilution: 1 $\mu$ g/ml