

## Product datasheet for TA363536

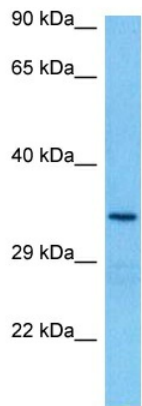
### Gm527 Rabbit Polyclonal Antibody

#### Product data:

<b>Product Type:</b>	Primary Antibodies
<b>Applications:</b>	WB
<b>Reactivity:</b>	Mouse
<b>Host:</b>	Rabbit
<b>Clonality:</b>	Polyclonal
<b>Immunogen:</b>	The immunogen is a synthetic peptide directed towards the N terminal region of mouse GM527
<b>Specificity:</b>	<b>Expected reactivity:</b> Mouse
<b>Formulation:</b>	Liquid. Purified antibody supplied in 1x PBS buffer with 0.09% (w/v) sodium azide and 2% sucrose.
<b>Concentration:</b>	lot specific
<b>Purification:</b>	Affinity purified
<b>Conjugation:</b>	Unconjugated
<b>Storage:</b>	For short term use, store at 2-8°C up to 1 week. For long term storage, store at -20°C in small aliquots to prevent freeze-thaw cycles.
<b>Stability:</b>	Shelf life: one year from despatch.
<b>Predicted Protein Size:</b>	36 kDa
<b>Gene Name:</b>	predicted gene 527
<b>Database Link:</b>	<a href="#">NP_001020776.1</a> <a href="#">Entrez Gene 217648 Mouse</a> <a href="#">Q4KL13</a>
<b>Background:</b>	The function of this protein remains unknown.
<b>Synonyms:</b>	MGC117765



Product images:



Host: Rabbit  
Target Name: Gm527  
Sample Type: Mouse Skeletal Muscle Lysate  
Antibody Dilution: 1.0µg/ml

Host: Rabbit  
Target Name: GM527  
Sample Tissue: Mouse Skeletal Muscle lysates  
Antibody Dilution: 1ug/ml