

## Product datasheet for **TA363534**

### **Prl7c1 Rabbit Polyclonal Antibody**

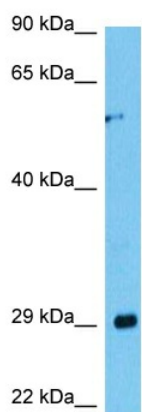
#### **Product data:**

Product Type:	Primary Antibodies
Applications:	WB
Reactivity:	Mouse
Host:	Rabbit
Clonality:	Polyclonal
Immunogen:	The immunogen is a synthetic peptide directed towards the middle region of mouse PRL7C1
Specificity:	<b>Expected reactivity:</b> Mouse
Formulation:	Liquid. Purified antibody supplied in 1x PBS buffer with 0.09% (w/v) sodium azide and 2% sucrose.
Concentration:	lot specific
Purification:	Affinity purified
Conjugation:	Unconjugated
Storage:	For short term use, store at 2-8°C up to 1 week. For long term storage, store at -20°C in small aliquots to prevent freeze-thaw cycles.
Stability:	Shelf life: one year from despatch.
Predicted Protein Size:	29 kDa
Gene Name:	prolactin family 7, subfamily c, member 1
Database Link:	<a href="#">NP_080482.1</a> <a href="#">Entrez Gene 67505 Mouse</a> <a href="#">Q9CRB5</a>
Background:	The function of this protein remains unknown.
Synonyms:	1600017N11Rik; PLP-O; Prlpo; Prplo; RP23-20A22.3



[View online »](#)

## Product images:



Host: Rabbit  
Target Name: Pr17c1  
Sample Type: Mouse Spleen Lysate  
Antibody Dilution: 1.0 $\mu$ g/ml

Host: Rabbit  
Target Name: PRL7C1  
Sample Tissue: Mouse Spleen lysates  
Antibody Dilution: 1 $\mu$ g/ml