

Product datasheet for **TA363527**

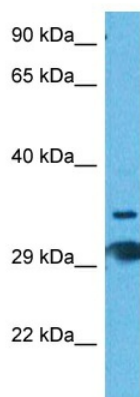
Tas2r135 Rabbit Polyclonal Antibody

Product data:

Product Type:	Primary Antibodies
Applications:	WB
Reactivity:	Mouse
Host:	Rabbit
Clonality:	Polyclonal
Immunogen:	The immunogen is a synthetic peptide directed towards the N terminal region of mouse TAS2R135
Specificity:	Expected reactivity: Mouse
Formulation:	Liquid. Purified antibody supplied in 1x PBS buffer with 0.09% (w/v) sodium azide and 2% sucrose.
Concentration:	lot specific
Purification:	Affinity purified
Conjugation:	Unconjugated
Storage:	For short term use, store at 2-8°C up to 1 week. For long term storage, store at -20°C in small aliquots to prevent freeze-thaw cycles.
Stability:	Shelf life: one year from despatch.
Predicted Protein Size:	36 kDa
Gene Name:	taste receptor, type 2, member 135
Database Link:	NP_954610.1 Entrez Gene 387512 Mouse Q7TQA9
Background:	Putative taste receptor which may play a role in the perception of bitterness.
Synonyms:	mt2r38; RGD1561078; Tas2r35

[View online »](#)

Product images:



Host: Rabbit
Target Name: Tas2r135
Sample Type: Mouse Kidney Lysate
Antibody Dilution: 1.0µg/ml

Host: Rabbit
Target Name: TAS2R135
Sample Tissue: Mouse Kidney lysates
Antibody Dilution: 1ug/ml