

Product datasheet for **TA363523**

Uchl4 Rabbit Polyclonal Antibody

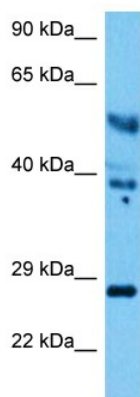
Product data:

Product Type:	Primary Antibodies
Applications:	WB
Reactivity:	Mouse
Host:	Rabbit
Clonality:	Polyclonal
Immunogen:	The immunogen is a synthetic peptide directed towards the middle region of mouse UCHL4
Specificity:	Expected reactivity: Mouse
Formulation:	Liquid. Purified antibody supplied in 1x PBS buffer with 0.09% (w/v) sodium azide and 2% sucrose.
Concentration:	lot specific
Purification:	Affinity purified
Conjugation:	Unconjugated
Storage:	For short term use, store at 2-8°C up to 1 week. For long term storage, store at -20°C in small aliquots to prevent freeze-thaw cycles.
Stability:	Shelf life: one year from despatch.
Predicted Protein Size:	26 kDa
Gene Name:	ubiquitin carboxyl-terminal esterase L4
Database Link:	NP_291085.1 Entrez Gene 93841 Mouse P58321
Background:	Ubiquitin-protein hydrolase is involved both in the processing of ubiquitin precursors and of ubiquitinated proteins. This enzyme is a thiol protease that recognizes and hydrolyzes a peptide bond at the C-terminal glycine of ubiquitin.
Synonyms:	Uchl4



[View online »](#)

Product images:



Host: Rabbit
Target Name: Uchl4
Sample Type: Mouse Liver Lysate
Antibody Dilution: 1.0µg/ml

Host: Rabbit
Target Name: UCHL4
Sample Tissue: Mouse Liver lysates
Antibody Dilution: 1ug/ml