

## Product datasheet for **TA363520**

### Abhd17a Rabbit Polyclonal Antibody

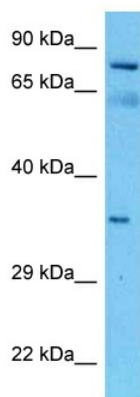
#### Product data:

Product Type:	Primary Antibodies
Applications:	WB
Reactivity:	Rat
Host:	Rabbit
Clonality:	Polyclonal
Immunogen:	The immunogen is a synthetic peptide directed towards the middle region of rat FAM108A
Specificity:	<b>Expected reactivity:</b> Rat
Formulation:	Liquid. Purified antibody supplied in 1x PBS buffer with 0.09% (w/v) sodium azide and 2% sucrose.
Concentration:	lot specific
Purification:	Affinity purified
Conjugation:	Unconjugated
Storage:	For short term use, store at 2-8°C up to 1 week. For long term storage, store at -20°C in small aliquots to prevent freeze-thaw cycles.
Stability:	Shelf life: one year from despatch.
Predicted Protein Size:	34 kDa
Gene Name:	abhydrolase domain containing 17A
Database Link:	<a href="#">NP_001006984.1</a> <a href="#">Entrez Gene 299617 Rat</a> <a href="#">Q5XIJ5</a>
Synonyms:	C19orf27; FAM108A1



[View online »](#)

## Product images:



Host: Rabbit  
Target Name: Fam108a  
Sample Type: Rat Thymus Lysate  
Antibody Dilution: 1.0 $\mu$ g/ml

Host: Rabbit  
Target Name: FAM108A  
Sample Tissue: Rat Thymus lysates  
Antibody Dilution: 1 ug/ml