

Product datasheet for **TA363519**

Slc7a6os Rabbit Polyclonal Antibody

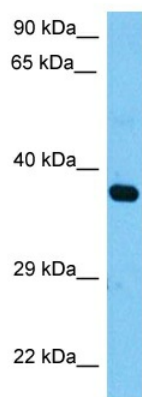
Product data:

| | |
|-------------------------|---|
| Product Type: | Primary Antibodies |
| Applications: | WB |
| Reactivity: | Mouse |
| Host: | Rabbit |
| Clonality: | Polyclonal |
| Immunogen: | The immunogen is a synthetic peptide directed towards the middle region of mouse SLC7A6OS |
| Specificity: | Expected reactivity: Mouse |
| Formulation: | Liquid. Purified antibody supplied in 1x PBS buffer with 0.09% (w/v) sodium azide and 2% sucrose. |
| Concentration: | lot specific |
| Purification: | Affinity purified |
| Conjugation: | Unconjugated |
| Storage: | For short term use, store at 2-8°C up to 1 week. For long term storage, store at -20°C in small aliquots to prevent freeze-thaw cycles. |
| Stability: | Shelf life: one year from despatch. |
| Predicted Protein Size: | 35 kDa |
| Gene Name: | solute carrier family 7, member 6 opposite strand |
| Database Link: | NP_001007568.1 Entrez Gene 66432 Mouse Q7TPE5 |
| Background: | Directs RNA polymerase II nuclear import. |
| Synonyms: | FLJ13291 |



[View online »](#)

Product images:



Host: Rabbit
Target Name: Slc7a6os
Sample Type: Mouse Testis Lysate
Antibody Dilution: 1.0µg/ml

Host: Rabbit
Target Name: SLC7A6OS
Sample Tissue: Mouse Testis lysates
Antibody Dilution: 1ug/ml