

## Product datasheet for **TA363512**

### **Plekhh3 Rabbit Polyclonal Antibody**

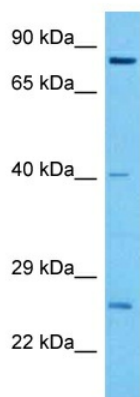
#### **Product data:**

Product Type:	Primary Antibodies
Applications:	WB
Reactivity:	Mouse
Host:	Rabbit
Clonality:	Polyclonal
Immunogen:	The immunogen is a synthetic peptide directed towards the N terminal region of mouse PLEKHH3
Specificity:	<b>Expected reactivity:</b> Mouse
Formulation:	Liquid. Purified antibody supplied in 1x PBS buffer with 0.09% (w/v) sodium azide and 2% sucrose.
Concentration:	lot specific
Purification:	Affinity purified
Conjugation:	Unconjugated
Storage:	For short term use, store at 2-8°C up to 1 week. For long term storage, store at -20°C in small aliquots to prevent freeze-thaw cycles.
Stability:	Shelf life: one year from despatch.
Predicted Protein Size:	87 kDa
Gene Name:	pleckstrin homology domain containing, family H (with MyTH4 domain) member 3
Database Link:	<a href="#">NP_666142.1</a> <a href="#">Entrez Gene 217198 Mouse</a> <a href="#">Q8VCE9</a>
Background:	The function of this protein remains unknown.
Synonyms:	FLJ21019



[View online »](#)

## Product images:



Host: Rabbit  
Target Name: Plekh3  
Sample Type: Mouse Spleen Lysate  
Antibody Dilution: 1.0µg/ml

Host: Rabbit  
Target Name: PLEKHH3  
Sample Tissue: Mouse Spleen lysates  
Antibody Dilution: 1ug/ml