

## Product datasheet for **TA363502**

### Krt42 Rabbit Polyclonal Antibody

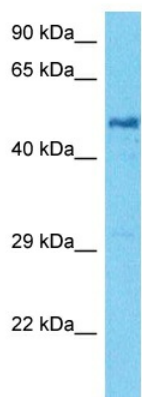
#### Product data:

Product Type:	Primary Antibodies
Applications:	WB
Reactivity:	Mouse
Host:	Rabbit
Clonality:	Polyclonal
Immunogen:	The immunogen is a synthetic peptide directed towards the middle region of mouse KRT42
Specificity:	<b>Expected reactivity:</b> Mouse
Formulation:	Liquid. Purified antibody supplied in 1x PBS buffer with 0.09% (w/v) sodium azide and 2% sucrose. <i>Note that this product is shipped as lyophilized powder to China customers.</i>
Concentration:	lot specific
Purification:	Affinity purified
Conjugation:	Unconjugated
Storage:	For short term use, store at 2-8°C up to 1 week. For long term storage, store at -20°C in small aliquots to prevent freeze-thaw cycles.
Stability:	Shelf life: one year from despatch.
Predicted Protein Size:	49 kDa
Gene Name:	keratin 42
Database Link:	<a href="#">NP_997648.2</a> <a href="#">Entrez Gene 68239 Mouse</a> <a href="#">Q6IFX2</a>
Background:	There are two types of cytoskeletal and microfibrillar keratin: I (acidic; 40-55 kDa) and II (neutral to basic; 56-70 kDa).
Synonyms:	2410039E07Rik; ecat6; K17n; Ka22



[View online »](#)

Product images:



Host: Rabbit  
Target Name: Krt42  
Sample Type: SP2/0 Cell Lysate  
Antibody Dilution: 1.0µg/ml

Host: Rabbit  
Target Name: KRT42  
Sample Tissue: Mouse SP2/0 Whole Cell lysates  
Antibody Dilution: 1ug/ml