

Product datasheet for **TA363501**

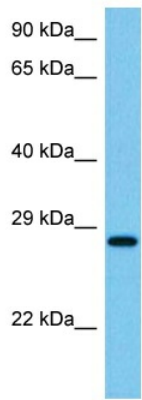
Alyref2 Rabbit Polyclonal Antibody

Product data:

Product Type:	Primary Antibodies
Applications:	WB
Reactivity:	Mouse
Host:	Rabbit
Clonality:	Polyclonal
Immunogen:	The immunogen is a synthetic peptide directed towards the N terminal region of mouse REFBP2
Specificity:	Expected reactivity: Mouse
Formulation:	Liquid. Purified antibody supplied in 1x PBS buffer with 0.09% (w/v) sodium azide and 2% sucrose.
Concentration:	lot specific
Purification:	Affinity purified
Conjugation:	Unconjugated
Storage:	For short term use, store at 2-8°C up to 1 week. For long term storage, store at -20°C in small aliquots to prevent freeze-thaw cycles.
Stability:	Shelf life: one year from despatch.
Predicted Protein Size:	24 kDa
Gene Name:	Aly/REF export factor 2
Database Link:	NP_062357.3 Entrez Gene 56009 Mouse Q9JJW6
Synonyms:	C130042O11Rik; REF2; Refbp2



Product images:



Host: Rabbit
Target Name: Refbp2
Sample Type: Mouse Pancreas Lysate
Antibody Dilution: 1.0µg/ml

Host: Rabbit
Target Name: REFBP2
Sample Tissue: Mouse Pancreas lysates
Antibody Dilution: 1ug/ml