

Product datasheet for **TA363498**

Cep95 Rabbit Polyclonal Antibody

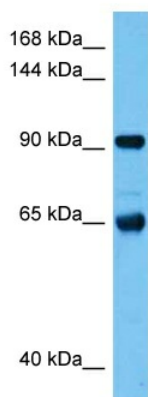
Product data:

Product Type:	Primary Antibodies
Applications:	WB
Reactivity:	Rat
Host:	Rabbit
Clonality:	Polyclonal
Immunogen:	The immunogen is a synthetic peptide directed towards the middle region of rat CCDC45
Specificity:	Expected reactivity: Rat
Formulation:	Liquid. Purified antibody supplied in 1x PBS buffer with 0.09% (w/v) sodium azide and 2% sucrose.
Concentration:	lot specific
Purification:	Affinity purified
Conjugation:	Unconjugated
Storage:	For short term use, store at 2-8°C up to 1 week. For long term storage, store at -20°C in small aliquots to prevent freeze-thaw cycles.
Stability:	Shelf life: one year from despatch.
Predicted Protein Size:	90 kDa
Gene Name:	centrosomal protein 95
Database Link:	NP_796062.2 Entrez Gene 287766 Rat Q5XI03
Synonyms:	4732496G21Rik; AI118346; AI448335; Ccdc45; D330027A14Rik; F630025I20Rik; RGD1309655



[View online »](#)

Product images:



Host: Rabbit
Target Name: Ccdc45
Sample Type: Rat Skeletal Muscle Lysate
Antibody Dilution: 1.0 µg/ml

Host: Rabbit
Target Name: CCDC45
Sample Tissue: Rat Skeletal Muscle lysates
Antibody Dilution: 1 µg/ml