

Product datasheet for **TA363496**

Ms4a8a Rabbit Polyclonal Antibody

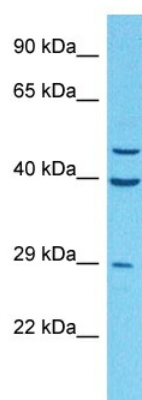
Product data:

Product Type:	Primary Antibodies
Applications:	WB
Reactivity:	Mouse
Host:	Rabbit
Clonality:	Polyclonal
Immunogen:	The immunogen is a synthetic peptide directed towards the C terminal region of mouse MS4A8A
Specificity:	Expected reactivity: Mouse
Formulation:	Liquid. Purified antibody supplied in 1x PBS buffer with 0.09% (w/v) sodium azide and 2% sucrose. <i>Note that this product is shipped as lyophilized powder to China customers.</i>
Concentration:	lot specific
Purification:	Affinity purified
Conjugation:	Unconjugated
Storage:	For short term use, store at 2-8°C up to 1 week. For long term storage, store at -20°C in small aliquots to prevent freeze-thaw cycles.
Stability:	Shelf life: one year from despatch.
Predicted Protein Size:	29 kDa
Gene Name:	membrane-spanning 4-domains, subfamily A, member 8A
Database Link:	NP_071875.2 Entrez Gene 64381 Mouse Q99N10-1
Background:	May be involved in signal transduction as a component of a multimeric receptor complex.
Synonyms:	2010004L09Rik; AI481240; CD20L5; Ms4a8; Ms4a8b



[View online »](#)

Product images:



Host: Rabbit
Target Name: Ms4a8a
Sample Type: Mouse Liver Lysate
Antibody Dilution: 1.0 μ g/ml

Host: Rabbit
Target Name: MS4A8A
Sample Tissue: Mouse Liver lysates
Antibody Dilution: 1 μ g/ml