

## Product datasheet for **TA363493**

### KLK1b1 Rabbit Polyclonal Antibody

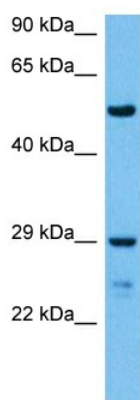
#### Product data:

Product Type:	Primary Antibodies
Applications:	WB
Reactivity:	Mouse
Host:	Rabbit
Clonality:	Polyclonal
Immunogen:	The immunogen is a synthetic peptide directed towards the middle region of mouse KLK1B1
Specificity:	<b>Expected reactivity:</b> Mouse
Formulation:	Liquid. Purified antibody supplied in 1x PBS buffer with 0.09% (w/v) sodium azide and 2% sucrose.
Concentration:	lot specific
Purification:	Affinity purified
Conjugation:	Unconjugated
Storage:	For short term use, store at 2-8°C up to 1 week. For long term storage, store at -20°C in small aliquots to prevent freeze-thaw cycles.
Stability:	Shelf life: one year from despatch.
Predicted Protein Size:	29 kDa
Gene Name:	kallikrein 1-related peptidase b1
Database Link:	<a href="#">NP_034775.1</a> <a href="#">Entrez Gene 16623 Mouse P00755</a>
Background:	This gene encodes a member of the kallikrein subfamily of serine proteases that are involved in diverse physiological functions such as skin desquamation, tooth enamel formation, seminal liquefaction, synaptic neural plasticity and brain function. The encoded preproprotein undergoes proteolytic cleavage of the activation peptide to generate the functional enzyme. This gene is located in a cluster of several related kallikrein genes on chromosome 7.
Synonyms:	KLK1; mGK-1; mK1; TK



[View online »](#)

**Product images:**



Host: Rabbit  
Target Name: Klk1b1  
Sample Type: Mouse Pancreas Lysate  
Antibody Dilution: 1.0µg/ml

Host: Rabbit  
Target Name: KLK1B1  
Sample Tissue: Mouse Pancreas lysates  
Antibody Dilution: 1 ug/ml