

## Product datasheet for **TA363487**

### Mettl8 Rabbit Polyclonal Antibody

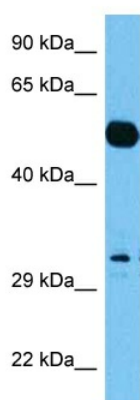
#### Product data:

Product Type:	Primary Antibodies
Applications:	WB
Reactivity:	Mouse
Host:	Rabbit
Clonality:	Polyclonal
Immunogen:	The immunogen is a synthetic peptide directed towards the middle region of mouse METTL8
Specificity:	<b>Expected reactivity:</b> Mouse
Formulation:	Liquid. Purified antibody supplied in 1x PBS buffer with 0.09% (w/v) sodium azide and 2% sucrose.
Concentration:	lot specific
Purification:	Affinity purified
Conjugation:	Unconjugated
Storage:	For short term use, store at 2-8°C up to 1 week. For long term storage, store at -20°C in small aliquots to prevent freeze-thaw cycles.
Stability:	Shelf life: one year from despatch.
Predicted Protein Size:	30 kDa
Gene Name:	methyltransferase like 8
Database Link:	<a href="#">NP_001103982.1</a> <a href="#">Entrez Gene 228019 Mouse</a> <a href="#">A2AUU0</a>
Background:	This locus encodes a member of the methyltransferase family, and is involved in chromatin remodeling. Transcripts from this locus can be induced or inhibited by cell stretch and affect cell differentiation in the myogenic or adipogenic pathways. Multiple transcript variants encoding different isoforms have been found for this gene. Additional splice variants have been described in the literature but they meet nonsense-mediated decay (NMD) criteria and are likely to be degraded as soon as they are transcribed.
Synonyms:	FLJ13334; FLJ13984; FLJ31054; FLJ42098; FLJ77788; TIP



[View online »](#)

## Product images:



Host: Rabbit  
Target Name: Mettl8  
Sample Type: Mouse Brain Lysate  
Antibody Dilution: 1.0µg/ml

Host: Rabbit  
Target Name: METTL8  
Sample Tissue: Mouse Brain lysates  
Antibody Dilution: 1ug/ml