

## Product datasheet for **TA363484**

### Spin4 Rabbit Polyclonal Antibody

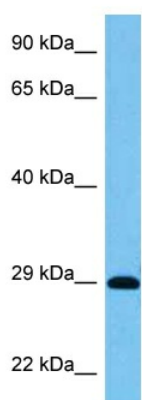
#### Product data:

Product Type:	Primary Antibodies
Applications:	WB
Reactivity:	Mouse
Host:	Rabbit
Clonality:	Polyclonal
Immunogen:	The immunogen is a synthetic peptide directed towards the middle region of mouse SPIN4
Specificity:	<b>Expected reactivity:</b> Mouse
Formulation:	Liquid. Purified antibody supplied in 1x PBS buffer with 0.09% (w/v) sodium azide and 2% sucrose.
Concentration:	lot specific
Purification:	Affinity purified
Conjugation:	Unconjugated
Storage:	For short term use, store at 2-8°C up to 1 week. For long term storage, store at -20°C in small aliquots to prevent freeze-thaw cycles.
Stability:	Shelf life: one year from despatch.
Predicted Protein Size:	27 kDa
Gene Name:	spindlin family, member 4
Database Link:	<a href="#">NP_848868.1</a> <a href="#">Entrez Gene 270624 Mouse</a> <a href="#">Q8K1L2</a>
Background:	Exhibits H3K4me3-binding activity.
Synonyms:	FLJ44984; MGC133224



[View online »](#)

## Product images:



Host: Rabbit  
Target Name: Spin4  
Sample Type: Mouse Small Intestine Lysate  
Antibody Dilution: 1.0 $\mu$ g/ml

Host: Rabbit  
Target Name: SPIN4  
Sample Tissue: Mouse Small Intestine lysates  
Antibody Dilution: 1 $\mu$ g/ml