

Product datasheet for **TA363482**

Otop3 Rabbit Polyclonal Antibody

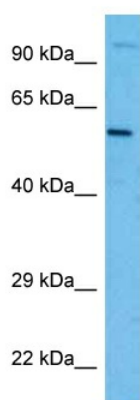
Product data:

Product Type:	Primary Antibodies
Applications:	WB
Reactivity:	Mouse
Host:	Rabbit
Clonality:	Polyclonal
Immunogen:	The immunogen is a synthetic peptide directed towards the N terminal region of mouse OTOP3
Specificity:	Expected reactivity: Mouse
Formulation:	Liquid. Purified antibody supplied in 1x PBS buffer with 0.09% (w/v) sodium azide and 2% sucrose.
Concentration:	lot specific
Purification:	Affinity purified
Conjugation:	Unconjugated
Storage:	For short term use, store at 2-8°C up to 1 week. For long term storage, store at -20°C in small aliquots to prevent freeze-thaw cycles.
Stability:	Shelf life: one year from despatch.
Predicted Protein Size:	63 kDa
Gene Name:	otopetrin 3
Database Link:	XP_006534179.1 Entrez Gene 69602 Mouse Q80UF9
Background:	Proton-selective channel that specifically transports protons into cells. Proton-selective channel activity is probably required in cell types that use changes in intracellular pH for cell signaling or to regulate biochemical or developmental processes.
Synonyms:	OTOP3



[View online »](#)

Product images:



Host: Rabbit
Target Name: Otop3
Sample Type: Mouse Thymus Lysate
Antibody Dilution: 1.0 µg/ml

Host: Rabbit
Target Name: OTOP3
Sample Tissue: Mouse Thymus lysates
Antibody Dilution: 1 µg/ml