

Product datasheet for **TA363478**

Ntmt1 Rabbit Polyclonal Antibody

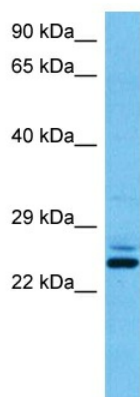
Product data:

Product Type:	Primary Antibodies
Applications:	WB
Reactivity:	Mouse
Host:	Rabbit
Clonality:	Polyclonal
Immunogen:	The immunogen is a synthetic peptide directed towards the N terminal region of mouse METTL11A
Specificity:	Expected reactivity: Mouse
Formulation:	Liquid. Purified antibody supplied in 1x PBS buffer with 0.09% (w/v) sodium azide and 2% sucrose. <i>Note that this product is shipped as lyophilized powder to China customers.</i>
Concentration:	lot specific
Purification:	Affinity purified
Conjugation:	Unconjugated
Storage:	For short term use, store at 2-8°C up to 1 week. For long term storage, store at -20°C in small aliquots to prevent freeze-thaw cycles.
Stability:	Shelf life: one year from despatch.
Predicted Protein Size:	25 kDa
Gene Name:	N-terminal Xaa-Pro-Lys N-methyltransferase 1
Database Link:	NP_733480.1 Entrez Gene 66617 Mouse Q8R2U4
Synonyms:	2610205E22Rik; AL033331; AL033332; Mettl11a; NTM1A; RGD1306582; RP23-221O14.3



[View online »](#)

Product images:



Host: Rabbit
Target Name: Mettl11a
Sample Type: Mouse Pancreas Lysate
Antibody Dilution: 1.0 μ g/ml

Host: Rabbit
Target Name: METTL11A
Sample Tissue: Mouse Pancreas lysates
Antibody Dilution: 1 ug/ml