

## Product datasheet for **TA363477**

### Micalcl Rabbit Polyclonal Antibody

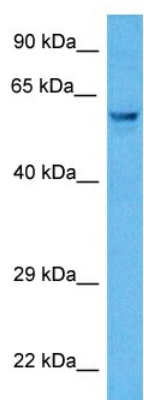
#### Product data:

Product Type:	Primary Antibodies
Applications:	WB
Reactivity:	Rat
Host:	Rabbit
Clonality:	Polyclonal
Immunogen:	The immunogen is a synthetic peptide directed towards the C terminal region of rat MICALCL
Specificity:	<b>Expected reactivity:</b> Rat
Formulation:	Liquid. Purified antibody supplied in 1x PBS buffer with 0.09% (w/v) sodium azide and 2% sucrose. <i>Note that this product is shipped as lyophilized powder to China customers.</i>
Concentration:	lot specific
Purification:	Affinity purified
Conjugation:	Unconjugated
Storage:	For short term use, store at 2-8°C up to 1 week. For long term storage, store at -20°C in small aliquots to prevent freeze-thaw cycles.
Stability:	Shelf life: one year from despatch.
Predicted Protein Size:	58 kDa
Gene Name:	MICAL C-terminal like
Database Link:	<a href="#">Entrez Gene 293180 Rat Q4G091-2</a>
Background:	May cooperate with MAPK1/ERK2 via an intracellular signal transduction pathway in the morphogenetic development of round spermatids to spermatozoa. May act as Rab effector protein and play a role in vesicle trafficking.
Synonyms:	Ebitein-1; Ebitein1; FLJ14966



[View online »](#)

## Product images:



Host: Rabbit  
Target Name: Micalcl  
Sample Type: Rat Lung Lysate  
Antibody Dilution: 1.0 $\mu$ g/ml

Host: Rabbit  
Target Name: MICALCL  
Sample Tissue: Rat Lung lysates  
Antibody Dilution: 1 $\mu$ g/ml