

Product datasheet for **TA363475**

Tmem101 Rabbit Polyclonal Antibody

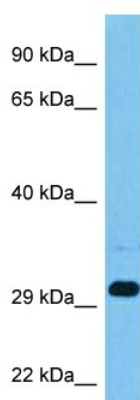
Product data:

Product Type:	Primary Antibodies
Applications:	WB
Reactivity:	Mouse
Host:	Rabbit
Clonality:	Polyclonal
Immunogen:	The immunogen is a synthetic peptide directed towards the middle region of mouse TMEM101
Specificity:	Expected reactivity: Mouse
Formulation:	Liquid. Purified antibody supplied in 1x PBS buffer with 0.09% (w/v) sodium azide and 2% sucrose.
Concentration:	lot specific
Purification:	Affinity purified
Conjugation:	Unconjugated
Storage:	For short term use, store at 2-8°C up to 1 week. For long term storage, store at -20°C in small aliquots to prevent freeze-thaw cycles.
Stability:	Shelf life: one year from despatch.
Predicted Protein Size:	29 kDa
Gene Name:	transmembrane protein 101
Database Link:	NP_083925.2 Entrez Gene 76547 Mouse Q91VP7
Background:	May activate NF-kappa-B signaling pathways.
Synonyms:	FLJ23987; MGC4251



[View online »](#)

Product images:



Host: Rabbit
Target Name: Tmem101
Sample Type: Mouse Brain Lysate
Antibody Dilution: 1.0µg/ml

Host: Rabbit
Target Name: TMEM101
Sample Tissue: Mouse Brain lysates
Antibody Dilution: 1ug/ml