

## Product datasheet for **TA363469**

### Gpr152 Rabbit Polyclonal Antibody

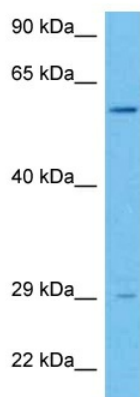
#### Product data:

Product Type:	Primary Antibodies
Applications:	WB
Reactivity:	Mouse
Host:	Rabbit
Clonality:	Polyclonal
Immunogen:	The immunogen is a synthetic peptide directed towards the N terminal region of mouse GPR152
Specificity:	<b>Expected reactivity:</b> Mouse
Formulation:	Liquid. Purified antibody supplied in 1x PBS buffer with 0.09% (w/v) sodium azide and 2% sucrose. <i>Note that this product is shipped as lyophilized powder to China customers.</i>
Concentration:	lot specific
Purification:	Affinity purified
Conjugation:	Unconjugated
Storage:	For short term use, store at 2-8°C up to 1 week. For long term storage, store at -20°C in small aliquots to prevent freeze-thaw cycles.
Stability:	Shelf life: one year from despatch.
Predicted Protein Size:	56 kDa
Gene Name:	G protein-coupled receptor 152
Database Link:	<a href="#">NP_996856.1</a> <a href="#">Entrez Gene 269053 Mouse</a> <a href="#">Q8BXS7</a>
Background:	Orphan receptor.
Synonyms:	A930009H15Rik; Gm673



[View online »](#)

## Product images:



Host: Rabbit  
Target Name: Gpr152  
Sample Type: Mouse Kidney Lysate  
Antibody Dilution: 1.0 $\mu$ g/ml

Host: Rabbit  
Target Name: GPR152  
Sample Tissue: Mouse Kidney lysates  
Antibody Dilution: 1 $\mu$ g/ml