

Product datasheet for **TA363454**

Lyz11 Rabbit Polyclonal Antibody

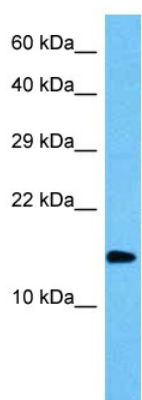
Product data:

Product Type:	Primary Antibodies
Applications:	WB
Reactivity:	Mouse
Host:	Rabbit
Clonality:	Polyclonal
Immunogen:	The immunogen is a synthetic peptide directed towards the middle terminal region of mouse LYZL1
Specificity:	Expected reactivity: Mouse
Formulation:	Liquid. Purified antibody supplied in 1x PBS buffer with 0.09% (w/v) sodium azide and 2% sucrose. <i>Note that this product is shipped as lyophilized powder to China customers.</i>
Concentration:	lot specific
Purification:	Affinity purified
Conjugation:	Unconjugated
Storage:	For short term use, store at 2-8°C up to 1 week. For long term storage, store at -20°C in small aliquots to prevent freeze-thaw cycles.
Stability:	Shelf life: one year from despatch.
Predicted Protein Size:	16 kDa
Gene Name:	lysozyme-like 1
Database Link:	NP_080368.1 Entrez Gene 67328 Mouse Q9CPX3
Background:	Hydrolysis of (1->4)-beta-linkages between N-acetylmuramic acid and N-acetyl-D-glucosamine residues in a peptidoglycan and between N-acetyl-D-glucosamine residues in chitodextrins.
Synonyms:	bA534G20.1; KAAG648; LYC2; MGC33408; PRO1278



[View online »](#)

Product images:



Host: Rabbit
Target Name: Lyzl1
Sample Type: Mouse Skeletal Muscle Lysate
Antibody Dilution: 1.0 μ g/ml

Host: Rabbit
Target Name: LYZL1
Sample Tissue: Mouse Mouse Skeletal Muscle lysates
Antibody Dilution: 1 μ g/ml