

Product datasheet for **TA363452**

Cd209d Rabbit Polyclonal Antibody

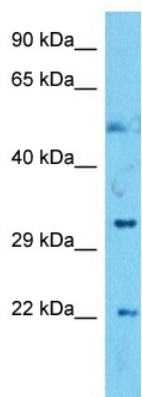
Product data:

Product Type:	Primary Antibodies
Applications:	WB
Reactivity:	Mouse
Host:	Rabbit
Clonality:	Polyclonal
Immunogen:	The immunogen is a synthetic peptide directed towards the middle region of mouse CD209D
Specificity:	Expected reactivity: Mouse
Formulation:	Liquid. Purified antibody supplied in 1x PBS buffer with 0.09% (w/v) sodium azide and 2% sucrose.
Concentration:	lot specific
Purification:	Affinity purified
Conjugation:	Unconjugated
Storage:	For short term use, store at 2-8°C up to 1 week. For long term storage, store at -20°C in small aliquots to prevent freeze-thaw cycles.
Stability:	Shelf life: one year from despatch.
Predicted Protein Size:	22 kDa
Gene Name:	CD209d antigen
Database Link:	NP_570974.1 Entrez Gene 170779 Mouse Q91ZW8-2
Background:	Probable pathogen-recognition receptor. May mediate the endocytosis of pathogens which are subsequently degraded in lysosomal compartments. May recognize in a calcium-dependent manner high mannose N-linked oligosaccharides in a variety of pathogen antigens.
Synonyms:	Clec4m; Dc-signr; mSIGNR3; RGD1561104; SIGN-R3; SIGNR3



[View online »](#)

Product images:



Host: Rabbit
Target Name: Cd209d
Sample Type: SP2/0 Cell Lysate
Antibody Dilution: 1.0 μ g/ml

Host: Rabbit
Target Name: CD209D
Sample Tissue: Mouse SP2/0 Whole Cell lysates
Antibody Dilution: 1 μ g/ml