

Product datasheet for **TA363444**

Tomt Rabbit Polyclonal Antibody

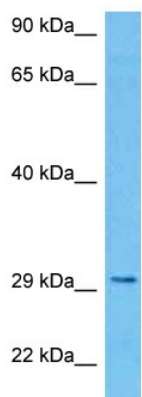
Product data:

Product Type:	Primary Antibodies
Applications:	WB
Reactivity:	Rat
Host:	Rabbit
Clonality:	Polyclonal
Immunogen:	The immunogen is a synthetic peptide directed towards the middle region of rat TOMT
Specificity:	Expected reactivity: Rat
Formulation:	Liquid. Purified antibody supplied in 1x PBS buffer with 0.09% (w/v) sodium azide and 2% sucrose. <i>Note that this product is shipped as lyophilized powder to China customers.</i>
Concentration:	lot specific
Purification:	Affinity purified
Conjugation:	Unconjugated
Storage:	For short term use, store at 2-8°C up to 1 week. For long term storage, store at -20°C in small aliquots to prevent freeze-thaw cycles.
Stability:	Shelf life: one year from despatch.
Predicted Protein Size:	29 kDa
Gene Name:	transmembrane O-methyltransferase
Database Link:	NP_001075148.1 Entrez Gene 791260 Mouse B6CZ62
Background:	Catalyzes the O-methylation, and thereby the inactivation, of catecholamine neurotransmitters and catechol hormones (By similarity). Required for auditory function (By similarity). Component of the cochlear hair cell's mechanotransduction (MET) machinery. Involved in the assembly of the asymmetric tip-link MET complex. Required for transportation of TMC1 and TMC2 proteins into the mechanically sensitive stereocilia of the hair cells. The function in MET is independent of the enzymatic activity (By similarity).
Synonyms:	Comt2; F930017I19Rik



[View online »](#)

Product images:



Host: Rabbit
Target Name: Tomt
Sample Type: Rat Liver Lysate
Antibody Dilution: 1.0 μ g/ml

Host: Rabbit
Target Name: TOMT
Sample Tissue: Rat Liver lysates
Antibody Dilution: 1 μ g/ml