

## Product datasheet for **TA363442**

### Acsm2 Rabbit Polyclonal Antibody

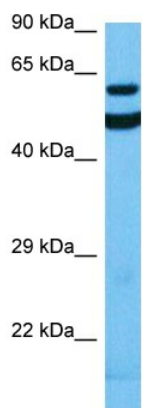
#### Product data:

Product Type:	Primary Antibodies
Applications:	WB
Reactivity:	Mouse
Host:	Rabbit
Clonality:	Polyclonal
Immunogen:	The immunogen is a synthetic peptide directed towards the middle region of mouse ACSM2
Specificity:	<b>Expected reactivity:</b> Mouse
Formulation:	Liquid. Purified antibody supplied in 1x PBS buffer with 0.09% (w/v) sodium azide and 2% sucrose.
Concentration:	lot specific
Purification:	Affinity purified
Conjugation:	Unconjugated
Storage:	For short term use, store at 2-8°C up to 1 week. For long term storage, store at -20°C in small aliquots to prevent freeze-thaw cycles.
Stability:	Shelf life: one year from despatch.
Predicted Protein Size:	64 kDa
Gene Name:	acyl-CoA synthetase medium-chain family member 2
Database Link:	<a href="#">NP_001171448.1</a> <a href="#">Entrez Gene 233799 Mouse</a> <a href="#">Q8K0L3</a>
Background:	Has medium-chain fatty acid:CoA ligase activity with broad substrate specificity (in vitro). Acts on acids from C4 to C(11) and on the corresponding 3-hydroxy- and 2,3- or 3,4-unsaturated acids (in vitro) (By similarity).
Synonyms:	AI315615; BC031140



[View online »](#)

## Product images:



Host: Rabbit  
Target Name: Acsm2  
Sample Type: Mouse Kidney Lysate  
Antibody Dilution: 1.0 $\mu$ g/ml

Host: Rabbit  
Target Name: ACSM2  
Sample Tissue: Mouse Kidney lysates  
Antibody Dilution: 1 $\mu$ g/ml