

## Product datasheet for **TA363441**

### Syt15 Rabbit Polyclonal Antibody

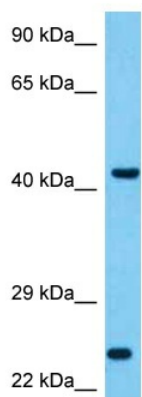
#### Product data:

Product Type:	Primary Antibodies
Applications:	WB
Reactivity:	Mouse
Host:	Rabbit
Clonality:	Polyclonal
Immunogen:	The immunogen is a synthetic peptide directed towards the middle region of mouse SYT15
Specificity:	<b>Expected reactivity:</b> Mouse
Formulation:	Liquid. Purified antibody supplied in 1x PBS buffer with 0.09% (w/v) sodium azide and 2% sucrose.
Concentration:	lot specific
Purification:	Affinity purified
Conjugation:	Unconjugated
Storage:	For short term use, store at 2-8°C up to 1 week. For long term storage, store at -20°C in small aliquots to prevent freeze-thaw cycles.
Stability:	Shelf life: one year from despatch.
Predicted Protein Size:	47 kDa
Gene Name:	synaptotagmin XV
Database Link:	<a href="#">NP_795905.2</a> <a href="#">Entrez Gene 319508 Mouse</a> <a href="#">Q8C6N3</a>
Background:	May be involved in the trafficking and exocytosis of secretory vesicles in non-neuronal tissues.
Synonyms:	CHR10SYT; sytXV



[View online »](#)

Product images:



Host: Rabbit  
Target Name: Syt15  
Sample Type: Mouse Pancreas Lysate  
Antibody Dilution: 1.0 $\mu$ g/ml

Host: Rabbit  
Target Name: SYT15  
Sample Tissue: Mouse Pancreas lysates  
Antibody Dilution: 1 $\mu$ g/ml