

Product datasheet for **TA363437**

Ap1g2 Rabbit Polyclonal Antibody

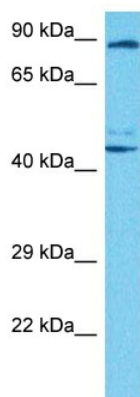
Product data:

Product Type:	Primary Antibodies
Applications:	WB
Reactivity:	Mouse
Host:	Rabbit
Clonality:	Polyclonal
Immunogen:	The immunogen is a synthetic peptide directed towards the middle region of mouse AP1G2
Specificity:	Expected reactivity: Mouse
Formulation:	Liquid. Purified antibody supplied in 1x PBS buffer with 0.09% (w/v) sodium azide and 2% sucrose. <i>Note that this product is shipped as lyophilized powder to China customers.</i>
Concentration:	lot specific
Purification:	Affinity purified
Conjugation:	Unconjugated
Storage:	For short term use, store at 2-8°C up to 1 week. For long term storage, store at -20°C in small aliquots to prevent freeze-thaw cycles.
Stability:	Shelf life: one year from despatch.
Predicted Protein Size:	87 kDa
Gene Name:	adaptor protein complex AP-1, gamma 2 subunit
Database Link:	NP_031481.2 Entrez Gene 11766 Mouse O88512
Background:	This gene encodes the gamma-2 subunit of the adaptor protein complex 1 (AP-1). AP-1 complex is a heterotetramer comprised of two heavy and one each of medium and small subunits. The encoded protein is a heavy subunit of AP-1 complex that regulates polarized sorting of cargo at the trans-Golgi network and endosomes. Alternative splicing of this gene results in multiple transcript variants.
Synonyms:	G2AD; Gamma2-adaptin; OTTHUMP00000164600



[View online »](#)

Product images:



Host: Rabbit
Target Name: Ap1g2
Sample Type: Mouse Heart Lysate
Antibody Dilution: 1.0 μ g/ml

Host: Rabbit
Target Name: AP1G2
Sample Tissue: Mouse Heart lysates
Antibody Dilution: 1 ug/ml