

## Product datasheet for **TA363429**

### Art2a Rabbit Polyclonal Antibody

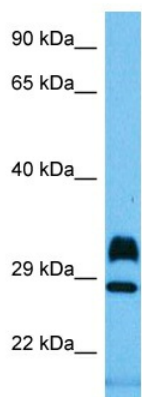
#### Product data:

Product Type:	Primary Antibodies
Applications:	WB
Reactivity:	Mouse
Host:	Rabbit
Clonality:	Polyclonal
Immunogen:	The immunogen is a synthetic peptide directed towards the middle region of mouse ART2A
Specificity:	<b>Expected reactivity:</b> Mouse
Formulation:	Liquid. Purified antibody supplied in 1x PBS buffer with 0.09% (w/v) sodium azide and 2% sucrose.
Concentration:	lot specific
Purification:	Affinity purified
Conjugation:	Unconjugated
Storage:	For short term use, store at 2-8°C up to 1 week. For long term storage, store at -20°C in small aliquots to prevent freeze-thaw cycles.
Stability:	Shelf life: one year from despatch.
Predicted Protein Size:	33 kDa
Gene Name:	ADP-ribosyltransferase 2a, pseudogene
Database Link:	<a href="#">NP_031516.1</a> <a href="#">Entrez Gene 11871 Mouse</a> <a href="#">P17981</a>



[View online »](#)

Product images:



Host: Rabbit  
Target Name: Art2a  
Sample Type: Mouse Lung Lysate  
Antibody Dilution: 1.0 $\mu$ g/ml

Host: Rabbit  
Target Name: ART2A  
Sample Tissue: Mouse Lung lysates  
Antibody Dilution: 1 ug/ml