

## Product datasheet for **TA363428**

### Lcn5 Rabbit Polyclonal Antibody

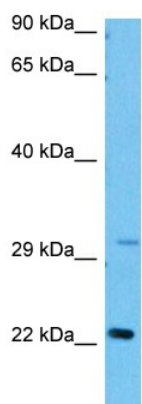
#### Product data:

Product Type:	Primary Antibodies
Applications:	WB
Reactivity:	Mouse
Host:	Rabbit
Clonality:	Polyclonal
Immunogen:	The immunogen is a synthetic peptide directed towards the middle region of mouse LCN5
Specificity:	<b>Expected reactivity:</b> Mouse
Formulation:	Liquid. Purified antibody supplied in 1x PBS buffer with 0.09% (w/v) sodium azide and 2% sucrose. <i>Note that this product is shipped as lyophilized powder to China customers.</i>
Concentration:	lot specific
Purification:	Affinity purified
Conjugation:	Unconjugated
Storage:	For short term use, store at 2-8°C up to 1 week. For long term storage, store at -20°C in small aliquots to prevent freeze-thaw cycles.
Stability:	Shelf life: one year from despatch.
Predicted Protein Size:	21 kDa
Gene Name:	lipocalin 5
Database Link:	<a href="#">NP_001036095.1</a> <a href="#">Entrez Gene 13863 Mouse</a> <a href="#">A2AIB7</a>
Background:	This gene encodes a small secreted protein that is expressed in the epididymis and binds retinoic acid. The precursor protein is processed into both a longer major form and a shorter minor form. Alternatively spliced transcript variants encoding multiple isoforms have been observed for this gene.
Synonyms:	E-RABP; Erabp; MEP10



[View online »](#)

## Product images:



Host: Rabbit  
Target Name: Lcn5  
Sample Type: Mouse Testis Lysate  
Antibody Dilution: 1.0 $\mu$ g/ml

Host: Rabbit  
Target Name: LCN5  
Sample Tissue: Mouse Testis lysates  
Antibody Dilution: 1  $\mu$ g/ml