

## Product datasheet for **TA363427**

### Armc10 Rabbit Polyclonal Antibody

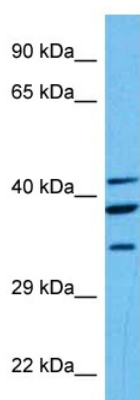
#### Product data:

Product Type:	Primary Antibodies
Applications:	WB
Reactivity:	Rat
Host:	Rabbit
Clonality:	Polyclonal
Immunogen:	The immunogen is a synthetic peptide directed towards the middle region of rat ARMC10
Specificity:	<b>Expected reactivity:</b> Rat
Formulation:	Liquid. Purified antibody supplied in 1x PBS buffer with 0.09% (w/v) sodium azide and 2% sucrose. <i>Note that this product is shipped as lyophilized powder to China customers.</i>
Concentration:	lot specific
Purification:	Affinity purified
Conjugation:	Unconjugated
Storage:	For short term use, store at 2-8°C up to 1 week. For long term storage, store at -20°C in small aliquots to prevent freeze-thaw cycles.
Stability:	Shelf life: one year from despatch.
Predicted Protein Size:	33 kDa
Gene Name:	armadillo repeat containing 10
Database Link:	<a href="#">NP_080310.1</a> <a href="#">Entrez Gene 67211 Mouse</a> <a href="#">B1WBW4</a>
Background:	May play a role in cell survival and cell growth. May suppress the transcriptional activity of p53/TP53 (By similarity).
Synonyms:	FLJ37850; MGC3195; PNAS112; SVH



[View online »](#)

## Product images:



Host: Rabbit  
Target Name: Armc10  
Sample Type: Rat Kidney Lysate  
Antibody Dilution: 1.0 $\mu$ g/ml

Host: Rabbit  
Target Name: ARMC10  
Sample Tissue: Rat Kidney lysates  
Antibody Dilution: 1 $\mu$ g/ml