

## Product datasheet for **TA363424**

### Abhd8 Rabbit Polyclonal Antibody

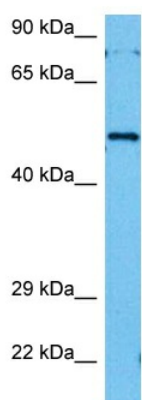
#### Product data:

|                         |   |
|-------------------------|---|
| Product Type:           | Primary Antibodies  |
| Applications:           | WB  |
| Reactivity:             | Mouse   |
| Host:                   | Rabbit  |
| Clonality:              | Polyclonal  |
| Immunogen:              | The immunogen is a synthetic peptide directed towards the middle region of mouse ABHD8  |
| Specificity:            | <b>Expected reactivity:</b> Mouse   |
| Formulation:            | Liquid. Purified antibody supplied in 1x PBS buffer with 0.09% (w/v) sodium azide and 2% sucrose.<br><i>Note that this product is shipped as lyophilized powder to China customers.</i> |
| Concentration:          | lot specific  |
| Purification:           | Affinity purified   |
| Conjugation:            | Unconjugated  |
| Storage:                | For short term use, store at 2-8°C up to 1 week. For long term storage, store at -20°C in small aliquots to prevent freeze-thaw cycles.   |
| Stability:              | Shelf life: one year from despatch.   |
| Predicted Protein Size: | 48 kDa  |
| Gene Name:              | abhydrolase domain containing 8   |
| Database Link:          | <a href="#">NP_071864.2</a><br><a href="#">Entrez Gene 64296 Mouse</a><br><a href="#">Q8R0P8</a>  |
| Background:             | The function of this protein remains unknown.   |
| Synonyms:               | FLJ11743; MGC2512; MGC14280   |



[View online »](#)

Product images:



Host: Rabbit  
Target Name: Abhd8  
Sample Type: Mouse Heart Lysate  
Antibody Dilution: 1.0 $\mu$ g/ml

Host: Rabbit  
Target Name: ABHD8  
Sample Tissue: Mouse Heart lysates  
Antibody Dilution: 1ug/ml