

Product datasheet for **TA363423**

Adck5 Rabbit Polyclonal Antibody

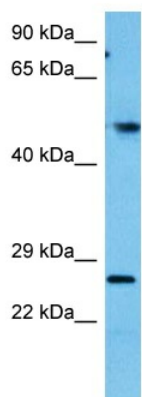
Product data:

Product Type:	Primary Antibodies
Applications:	WB
Reactivity:	Mouse
Host:	Rabbit
Clonality:	Polyclonal
Immunogen:	The immunogen is a synthetic peptide directed towards the middle region of mouse ADCK5
Specificity:	Expected reactivity: Mouse
Formulation:	Liquid. Purified antibody supplied in 1x PBS buffer with 0.09% (w/v) sodium azide and 2% sucrose.
Concentration:	lot specific
Purification:	Affinity purified
Conjugation:	Unconjugated
Storage:	For short term use, store at 2-8°C up to 1 week. For long term storage, store at -20°C in small aliquots to prevent freeze-thaw cycles.
Stability:	Shelf life: one year from despatch.
Predicted Protein Size:	52 kDa
Gene Name:	aarF domain containing kinase 5
Database Link:	NP_766548.2 Entrez Gene 268822 Mouse Q80V03-2
Background:	The function of this protein is not yet clear. It is not known if it has protein kinase activity and what type of substrate it would phosphorylate (Ser, Thr or Tyr).
Synonyms:	FLJ35454; MGC126708



[View online »](#)

Product images:



Host: Rabbit
Target Name: Adck5
Sample Type: Mouse Spleen Lysate
Antibody Dilution: 1.0µg/ml

Host: Rabbit
Target Name: ADCK5
Sample Tissue: Mouse Spleen lysates
Antibody Dilution: 1ug/ml