

## Product datasheet for **TA363420**

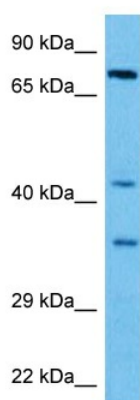
### **Tbc1d12 Rabbit Polyclonal Antibody**

#### **Product data:**

Product Type:	Primary Antibodies
Applications:	WB
Reactivity:	Mouse
Host:	Rabbit
Clonality:	Polyclonal
Immunogen:	The immunogen is a synthetic peptide directed towards the middle region of mouse TBC1D12
Specificity:	<b>Expected reactivity:</b> Mouse
Formulation:	Liquid. Purified antibody supplied in 1x PBS buffer with 0.09% (w/v) sodium azide and 2% sucrose.
Concentration:	lot specific
Purification:	Affinity purified
Conjugation:	Unconjugated
Storage:	For short term use, store at 2-8°C up to 1 week. For long term storage, store at -20°C in small aliquots to prevent freeze-thaw cycles.
Stability:	Shelf life: one year from despatch.
Predicted Protein Size:	77 kDa
Gene Name:	TBC1D12: TBC1 domain family, member 12
Database Link:	<a href="#">NP_666064.3</a> <a href="#">Entrez Gene 209478 Mouse</a> <a href="#">Q6A039</a>
Background:	May act as a GTPase-activating protein for Rab family protein(s).
Synonyms:	FLJ10339; FLJ12820; KIAA0608



[View online »](#)

**Product images:**


Host: Rabbit  
 Target Name: Tbc1d12  
 Sample Type: Mouse Brain Lysate  
 Antibody Dilution: 1.0µg/ml

Host: Rabbit  
 Target Name: TBC1D12  
 Sample Tissue: Mouse Brain lysates  
 Antibody Dilution: 1ug/ml