

Product datasheet for **TA363418**

Gxylt2 Rabbit Polyclonal Antibody

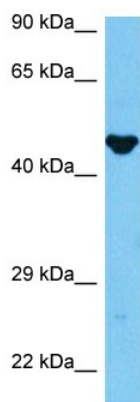
Product data:

Product Type:	Primary Antibodies
Applications:	WB
Reactivity:	Mouse
Host:	Rabbit
Clonality:	Polyclonal
Immunogen:	The immunogen is a synthetic peptide directed towards the middle region of mouse GXYLT2
Specificity:	Expected reactivity: Mouse
Formulation:	Liquid. Purified antibody supplied in 1x PBS buffer with 0.09% (w/v) sodium azide and 2% sucrose.
Concentration:	lot specific
Purification:	Affinity purified
Conjugation:	Unconjugated
Storage:	For short term use, store at 2-8°C up to 1 week. For long term storage, store at -20°C in small aliquots to prevent freeze-thaw cycles.
Stability:	Shelf life: one year from despatch.
Predicted Protein Size:	51 kDa
Gene Name:	glucoside xylosyltransferase 2
Database Link:	NP_941014.1 Entrez Gene 232313 Mouse Q810K9
Background:	Glycosyltransferase which elongates the O-linked glucose attached to EGF-like repeats in the extracellular domain of Notch proteins by catalyzing the addition of xylose.
Synonyms:	Glt8d4; Gm152



[View online »](#)

Product images:



Host: Rabbit
Target Name: Gxylt2
Sample Type: Mouse Brain Lysate
Antibody Dilution: 1.0µg/ml

Host: Rabbit
Target Name: GXYLT2
Sample Tissue: Mouse Brain lysates
Antibody Dilution: 1ug/ml