

Product datasheet for **TA363406**

Lrrc34 Rabbit Polyclonal Antibody

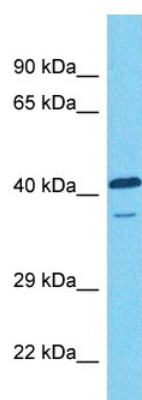
Product data:

Product Type:	Primary Antibodies
Applications:	WB
Reactivity:	Mouse
Host:	Rabbit
Clonality:	Polyclonal
Immunogen:	The immunogen is a synthetic peptide directed towards the middle region of mouse LRRC34
Specificity:	Expected reactivity: Mouse
Formulation:	Liquid. Purified antibody supplied in 1x PBS buffer with 0.09% (w/v) sodium azide and 2% sucrose.
Concentration:	lot specific
Purification:	Affinity purified
Conjugation:	Unconjugated
Storage:	For short term use, store at 2-8°C up to 1 week. For long term storage, store at -20°C in small aliquots to prevent freeze-thaw cycles.
Stability:	Shelf life: one year from despatch.
Predicted Protein Size:	45 kDa
Gene Name:	leucine rich repeat containing 34
Database Link:	NP_082217.1 Entrez Gene 71827 Mouse Q9DAM1
Background:	Highly expressed in stem cells where it may be involved in regulation of pluripotency. In embryonic stem cells (ESCs), important for normal expression of the pluripotency regulators POU5F1/OCT4 and KLF4. Also important for expression of the ectodermal marker gene NES and the endodermal marker gene GATA4. Promotes stem cell proliferation in vitro.
Synonyms:	FLJ27346; MGC27085



[View online »](#)

Product images:



Host: Rabbit
Target Name: Lrrc34
Sample Type: Mouse Skeletal Muscle Lysate
Antibody Dilution: 1.0µg/ml

Host: Rabbit
Target Name: LRRC34
Sample Tissue: Mouse Skeletal Muscle lysates
Antibody Dilution: 1ug/ml