

Product datasheet for **TA363404**

G6pd2 Rabbit Polyclonal Antibody

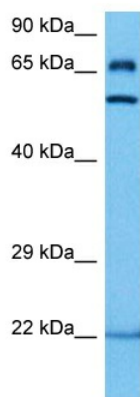
Product data:

Product Type:	Primary Antibodies
Applications:	WB
Reactivity:	Mouse
Host:	Rabbit
Clonality:	Polyclonal
Immunogen:	The immunogen is a synthetic peptide directed towards the middle region of mouse G6PD2
Specificity:	Expected reactivity: Mouse
Formulation:	Liquid. Purified antibody supplied in 1x PBS buffer with 0.09% (w/v) sodium azide and 2% sucrose.
Concentration:	lot specific
Purification:	Affinity purified
Conjugation:	Unconjugated
Storage:	For short term use, store at 2-8°C up to 1 week. For long term storage, store at -20°C in small aliquots to prevent freeze-thaw cycles.
Stability:	Shelf life: one year from despatch.
Predicted Protein Size:	59 kDa
Gene Name:	glucose-6-phosphate dehydrogenase 2
Database Link:	NP_062341.2 Entrez Gene 14380 Mouse P97324
Background:	Catalyzes the rate-limiting step of the oxidative pentose-phosphate pathway, which represents a route for the dissimilation of carbohydrates besides glycolysis. The main function of this enzyme is to provide reducing power (NADPH) and pentose phosphates for fatty acid and nucleic acid synthesis.
Synonyms:	G6pdx-ps1; Gpd-2; Gpd2



[View online »](#)

Product images:



Host: Rabbit
Target Name: G6pd2
Sample Type: Mouse Small Intestine Lysate
Antibody Dilution: 1.0 μ g/ml

Host: Rabbit
Target Name: G6PD2
Sample Tissue: Mouse Small Intestine lysates
Antibody Dilution: 1 μ g/ml