

Product datasheet for **TA363400**

Stoml1 Rabbit Polyclonal Antibody

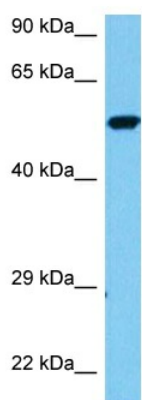
Product data:

| | |
|-------------------------|--|
| Product Type: | Primary Antibodies |
| Applications: | WB |
| Reactivity: | Mouse |
| Host: | Rabbit |
| Clonality: | Polyclonal |
| Immunogen: | The immunogen is a synthetic peptide directed towards the N terminal region of mouse STOML1 |
| Specificity: | Expected reactivity: Mouse |
| Formulation: | Liquid. Purified antibody supplied in 1x PBS buffer with 0.09% (w/v) sodium azide and 2% sucrose. <i>Note that this product is shipped as lyophilized powder to China customers.</i> |
| Concentration: | lot specific |
| Purification: | Affinity purified |
| Conjugation: | Unconjugated |
| Storage: | For short term use, store at 2-8°C up to 1 week. For long term storage, store at -20°C in small aliquots to prevent freeze-thaw cycles. |
| Stability: | Shelf life: one year from despatch. |
| Predicted Protein Size: | 43 kDa |
| Gene Name: | stomatin-like 1 |
| Database Link: | NP_081218.3 Entrez Gene 69106 Mouse Q8CI66 |
| Background: | May play a role in cholesterol transfer to late endosomes (By similarity). May play a role in modulating membrane acid-sensing ion channels. Can specifically inhibit proton-gated current of ASIC1 isoform 1. Can increase inactivation speed of ASIC3. May be involved in regulation of proton sensing in dorsal root ganglions. |
| Synonyms: | FLJ36370; hUNC-24; SLP-1; SLP1; STORP; UNC24 |



[View online »](#)

Product images:



Host: Rabbit
Target Name: Stoml1
Sample Type: Mouse Heart Lysate
Antibody Dilution: 1.0 μ g/ml

Host: Rabbit
Target Name: STOML1
Sample Tissue: Mouse Heart lysates
Antibody Dilution: 1 ug/ml