

Product datasheet for **TA363399**

Ctdspl2 Rabbit Polyclonal Antibody

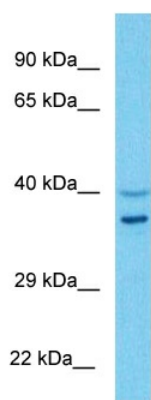
Product data:

Product Type:	Primary Antibodies
Applications:	WB
Reactivity:	Mouse
Host:	Rabbit
Clonality:	Polyclonal
Immunogen:	The immunogen is a synthetic peptide directed towards the N terminal region of mouse CTDSPL2
Specificity:	Expected reactivity: Mouse
Formulation:	Liquid. Purified antibody supplied in 1x PBS buffer with 0.09% (w/v) sodium azide and 2% sucrose.
Concentration:	lot specific
Purification:	Affinity purified
Conjugation:	Unconjugated
Storage:	For short term use, store at 2-8°C up to 1 week. For long term storage, store at -20°C in small aliquots to prevent freeze-thaw cycles.
Stability:	Shelf life: one year from despatch.
Predicted Protein Size:	33 kDa
Gene Name:	CTD (carboxy-terminal domain, RNA polymerase II, polypeptide A) small phosphatase like 2
Database Link:	NP_001277920.1 Entrez Gene 329506 Mouse Q8BG15-4
Background:	Probable phosphatase.
Synonyms:	FLJ10523; HSPC058; HSPC129



[View online »](#)

Product images:



Host: Rabbit
Target Name: Ctdspl2
Sample Type: Mouse Skeletal Muscle Lysate
Antibody Dilution: 1.0 μ g/ml

Host: Rabbit
Target Name: CTDSPL2
Sample Tissue: Mouse Skeletal Muscle lysates
Antibody Dilution: 1 μ g/ml