

## Product datasheet for **TA363398**

### Ttll9 Rabbit Polyclonal Antibody

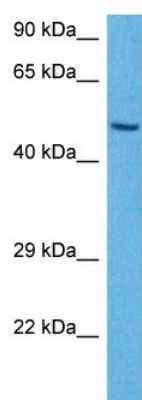
#### Product data:

Product Type:	Primary Antibodies
Applications:	WB
Reactivity:	Mouse
Host:	Rabbit
Clonality:	Polyclonal
Immunogen:	The immunogen is a synthetic peptide directed towards the middle region of mouse TLL9
Specificity:	<b>Expected reactivity:</b> Mouse
Formulation:	Liquid. Purified antibody supplied in 1x PBS buffer with 0.09% (w/v) sodium azide and 2% sucrose. <i>Note that this product is shipped as lyophilized powder to China customers.</i>
Concentration:	lot specific
Purification:	Affinity purified
Conjugation:	Unconjugated
Storage:	For short term use, store at 2-8°C up to 1 week. For long term storage, store at -20°C in small aliquots to prevent freeze-thaw cycles.
Stability:	Shelf life: one year from despatch.
Predicted Protein Size:	50 kDa
Gene Name:	tubulin tyrosine ligase-like family, member 9
Database Link:	<a href="#">NP_001077087.1</a> <a href="#">Entrez Gene 74711 Mouse</a> <a href="#">A2APC3</a>
Background:	Probable tubulin polyglutamylase that forms polyglutamate side chains on tubulin. Probably acts when complexed with other proteins (By similarity).
Synonyms:	C20orf125; dj310013.1; MGC120486; MGC120487



[View online »](#)

## Product images:



Host: Rabbit  
Target Name: TtlI9  
Sample Type: Mouse Heart Lysate  
Antibody Dilution: 1.0 $\mu$ g/ml

Host: Rabbit  
Target Name: TTL9  
Sample Tissue: Mouse Heart lysates  
Antibody Dilution: 1 $\mu$ g/ml