

Product datasheet for **TA363397**

Lgals12 Rabbit Polyclonal Antibody

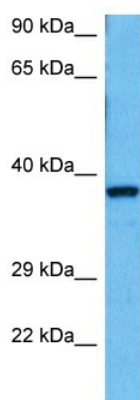
Product data:

Product Type:	Primary Antibodies
Applications:	WB
Reactivity:	Mouse
Host:	Rabbit
Clonality:	Polyclonal
Immunogen:	The immunogen is a synthetic peptide directed towards the middle region of mouse LGALS12
Specificity:	Expected reactivity: Mouse
Formulation:	Liquid. Purified antibody supplied in 1x PBS buffer with 0.09% (w/v) sodium azide and 2% sucrose. <i>Note that this product is shipped as lyophilized powder to China customers.</i>
Concentration:	lot specific
Purification:	Affinity purified
Conjugation:	Unconjugated
Storage:	For short term use, store at 2-8°C up to 1 week. For long term storage, store at -20°C in small aliquots to prevent freeze-thaw cycles.
Stability:	Shelf life: one year from despatch.
Predicted Protein Size:	35 kDa
Gene Name:	lectin, galactose binding, soluble 12
Database Link:	NP_062389.1 Entrez Gene 56072 Mouse Q91VD1
Background:	Binds lactose. May participate in the apoptosis of adipocytes.
Synonyms:	GALECTIN-12; GRIP1



[View online »](#)

Product images:



Host: Rabbit
Target Name: Lgals12
Sample Type: Mouse Kidney Lysate
Antibody Dilution: 1.0 μ g/ml

Host: Rabbit
Target Name: LGALS12
Sample Tissue: Mouse Kidney lysates
Antibody Dilution: 1 μ g/ml